

THIS DRAWING IS UNPUBLISHED. RELEASED FOR PUBLICATION
 © COPYRIGHT - By - ALL RIGHTS RESERVED.

| LOC | DIST | REVISIONS | | | | | |
|-----|------|-----------|-----|---------------------------|---------|-----|------|
| FT | 0 | P | LTR | DESCRIPTION | DATE | DWN | APVD |
| | | | D1 | REVISED PER ECO-11-004917 | 11MAR11 | RK | HMR |

SPECIFICATIONS:

MATERIALS:

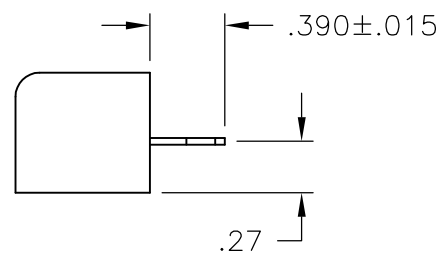
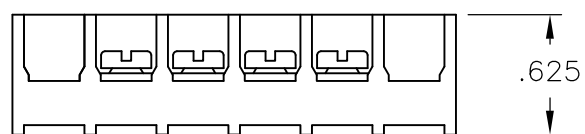
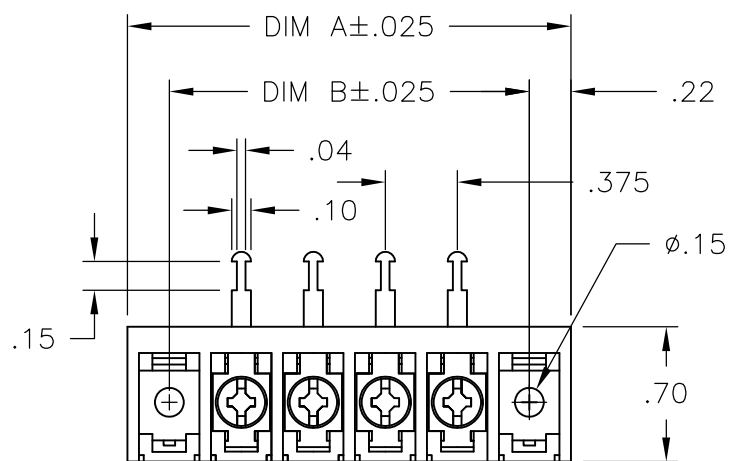
HOUSING: POLYAMIDE, (BLACK) UL94-0
 TERMINALS: COPPER ALLOY, TIN PLATE
 SCREWS: ZINC PLATED STEEL WITH CLEAR CHROMATE COATING

ELECTRICAL:

RATING: 25A 300V
 WIRE RANGE: 12 - 22 AWG

MECHANICAL:

MAXIMUM TORQUE RATING: 7 IN.-LBS.



| 10.875 | 11.311 | 28 | 6STR-28-008 | 2-1546242-8 |
|--------|--------|-------------|-------------------|-------------|
| 10.500 | 10.936 | 27 | 6STR-27-008 | 2-1546242-7 |
| 10.125 | 10.561 | 26 | 6STR-26-008 | 2-1546242-6 |
| 9.750 | 10.186 | 25 | 6STR-25-008 | 2-1546242-5 |
| 9.375 | 9.811 | 24 | 6STR-24-008 | 2-1546242-4 |
| 9.000 | 9.436 | 23 | 6STR-23-008 | 2-1546242-3 |
| 8.625 | 9.061 | 22 | 6STR-22-008 | 2-1546242-2 |
| 8.250 | 8.686 | 21 | 6STR-21-008 | 2-1546242-1 |
| 7.875 | 8.311 | 20 | 6STR-20-008 | 2-1546242-0 |
| 7.500 | 7.936 | 19 | 6STR-19-008 | 1-1546242-9 |
| 7.125 | 7.561 | 18 | 6STR-18-008 | 1-1546242-8 |
| 6.750 | 7.186 | 17 | 6STR-17-008 | 1-1546242-7 |
| 6.375 | 6.811 | 16 | 6STR-16-008 | 1-1546242-6 |
| 6.000 | 6.436 | 15 | 6STR-15-008 | 1-1546242-5 |
| 5.625 | 6.061 | 14 | 6STR-14-008 | 1-1546242-4 |
| 5.250 | 5.686 | 13 | 6STR-13-008 | 1-1546242-3 |
| 4.875 | 5.311 | 12 | 6STR-12-008 | 1-1546242-2 |
| 4.500 | 4.936 | 11 | 6STR-11-008 | 1-1546242-1 |
| 4.125 | 4.561 | 10 | 6STR-10-008 | 1-1546242-0 |
| 3.750 | 4.186 | 9 | 6STR-09-008 | 1546242-9 |
| 3.375 | 3.811 | 8 | 6STR-08-008 | 7-1437654-2 |
| 3.000 | 3.436 | 7 | 6STR-07-008 | 796988-7 |
| 2.625 | 3.061 | 6 | 6STR-06-008 | 1546242-6 |
| 2.250 | 2.686 | 5 | 6STR-05-008 | 9-1546158-4 |
| 1.875 | 2.311 | 4 | 6STR-04-008 | 1546242-4 |
| 1.500 | 1.936 | 3 | 6STR-03-008 | 796988-6 |
| 1.125 | 1.561 | 2 | 6STR-02-008 | 8-1546158-9 |
| DIM B | DIM A | NO. OF POS. | BUCHANAN PART NO. | PART NO. |

| | | | | | | |
|--|--|---------------------------------|-----------------|-----------|---------------|---------------|
| THIS DRAWING IS A CONTROLLED DOCUMENT. | | DWN E. ZANOLINI 04FEB2002 | TE Connectivity | | | |
| DIMENSIONS: INCHES | | CHK S. YODER 04FEB02 | | | | |
| TOLERANCES UNLESS OTHERWISE SPECIFIED: | | APVD S. YODER 04FEB02 | NAME | | | |
| 0 PLC ± - 1 PLC ± - 2 PLC ± .01 3 PLC ± .005 4 PLC ± - ANGLES ± 1/2 | | PRODUCT SPEC | 6STR-XX-008 | | | |
| MATERIAL | | APPLICATION SPEC | SIZE | CAGE CODE | DRAWING NO | RESTRICTED TO |
| FINISH | | WEIGHT | A3 | 00779 | C-7-1437654-2 | - |
| CUSTOMER DRAWING | | | SCALE | SHEET | REV | |
| | | | NTS | 1 OF 1 | D1 | |